

VILLAGE VOICE



SCENES OF SUMMER IN THE VILLAGE

WE VISIT WOOLLAHRA'S REMARKABLE RESERVOIRS

NEW COMMEMORATIVE STREET PLAQUE UNVEILED

**THE DORHAUERS: THE TWO BROTHERS WHO
BUILT WOOLLAHARA**

PRESIDENT'S REPORT



With Christmas and New Year a distant memory, welcome to our first *Village Voice* for 2024. I hope you are all rested and refreshed and looking forward to the year ahead.

Looking back over the festive season, the weather was kind for our

Annual Community Christmas Carols and enabled another outstanding success. With over 500 parents and children attending, singing, picnicking on the grass, getting their faces painted and enjoying delicious food from the barbecue, it is our premier community event. The report on the following pages has further details and photos. I'd like to thank all the local businesses who so generously sponsored us and provided raffle prizes, our event organiser Alan Smith for his tireless work, and my fellow committee members for all their support.

The end of 2023 also saw us hold our fourth **Christmas Window Display Competition** with over 40 entries. Please see the report opposite for details and photos of the winning displays.

We currently have no 'special event' planned for 2024 (Paint Woollahra Village Art Competition was the 2023 special event) but we are open to suggestions. Meanwhile we will proceed with our usual program of the **AGM and Social Drinks** in May, our **Annual Dinner** in June, and the **Christmas Carols and Christmas Window Display Competition** in December. Members will be informed of dates once they are finalised and they will be included in the next *Village Voice*.

As members have been notified by email, starting this year we have changed the QSWWA membership year to begin on 1 April, not 1 January. This means we now don't send out renewal emails at Christmas time when everyone is focused on other things. Members can expect the first renewal email around 1 March and can renew online by credit card.

Turning to matters of broader community concern, the saga of the Oxford Street East Cycleway continues, with Transport for NSW releasing their response to the reopened consultation in mid-December. As you will read in the report on page 14, it ignores the concerns of the majority opposed to

the cycleway and is continuing without any substantial change to its original design. So much for community consultation! We will update readers and members at the next milestone, when the Review of Environmental Factors will be put on public display for feedback.

The fight to preserve our heritage and unique village character continues. This time it is a highly inappropriate and non-conforming Development Application to expand the Hughenden Hotel, which flouts height restrictions and proposes no parking places for a 43-bedroom hotel when parking in Woollahra is already under great pressure. Further details are in the article on page 19 and we do encourage readers to submit their views to council so that the decision-making authorities are fully aware of community concerns.

GILES EDMONDS, PRESIDENT, QSWWA

JOIN THE QSWWA AND SUPPORT YOUR LOCAL COMMUNITY

The Queen Street and West Woollahra Association (QSWWA) has been an active voice for the Woollahra community for 51 years. Formed in 1972 as a forum for local residents and businesses to have a say in the protection and progress of their unique community, the association not only publishes your *Village Voice* four times a year but hosts your much-loved community events including the annual Carols in the Park and Christmas Window Competition. Become a member now! Scan the QR Code to take you to the membership application page, www.woollahravillage.com.au/join-us, on our website.



QSWWA CHRISTMAS WINDOW DISPLAY COMPETITION 2023

Congratulations to the winners of the 2023 Christmas Window Display Competition:

HALL OF FAME* – **MATTHEW ELY JEWELLERY**

FIRST PRIZE – **PARTERRE**

SECOND PRIZE – **DAVID STEIN & CO**

THIRD PRIZE – **SUSAN AVERY FLOWERS AND EVENTS**

MAYOR'S PRIZE – **TANORA**

PRESIDENT'S PRIZE – **PERRYMAN CARPETS**

PEOPLE'S CHOICE – **AQUEL (JOINT WINNER)**

PEOPLE'S CHOICE – **FOREVER VINTAGE (JOINT WINNER)**

Once again the standard of displays has been wonderful, so congratulations to all the participants and prize winners. Many thanks to our judges Deputy Mayor Sarah Swan, Anthony Puharich from Victor Churchill, and Alan Smith from the QSWWA committee, and to Sarah Swan for presenting the awards. Despite the 40-degree heat on the Saturday, the judges didn't let that affect their cool judgement in selecting a very worthy group of winners. A final thanks to the Woollahra Hotel for their generosity in hosting the award ceremony and making the evening so successful. See the photos of the winning windows below.

* Please note that the Hall of Fame Award is given to businesses that have consistently created outstanding window displays and are seen as setting the standard in the area. Matthew Ely Jewellery now joins Victor Churchill in this elite cohort.

GILES EDMONDS



The Queen Street and West Woollahra Association Ltd | ABN 98002872433
PO Box 16, Woollahra 1350
www.woollahravillage.com.au
Email: admin@qswwa.com.au
Instagram @woollahravillage_qswwa
The QSWWA is a residents and traders group in the area bounded by Jersey Road, Ocean Street between Jersey Road and Edgecliff Road, Edgecliff Road between Ocean Street and Leswell Street, Leswell Street, and Oxford Street between Leswell Street and Jersey Road.
QSWWA Committee: Giles Edmonds (President), Alan Smith (Treasurer), Christine Whiston (Vice-President), Jaqui Lane (Secretary), Richard Haigh, John Knott, Jennifer Stokes, Susie Willmott.
Village Voice: Christine Whiston (Editor), Kerry Klinner, MegaCity Design (Designer), Deborah Brown (Subeditor).
DISCLAIMER: The views expressed in this publication are those of the writers and not necessarily those of The Queen Street and West Woollahra Association Ltd.
The QSWWA acknowledges the traditional owners of the land on which we live and work, the Gadigal and Birrabirragal peoples, and pays its respect to elders past, present and emerging.

ON OUR COVER:

Summer in the village, captured by local photographer John Peel (more images page 12). His latest book, *Sydney: A Personal View*, is available at the Woollahra Bookshop.

NEW ART PRIZE
COMPETITION FOR QUEEN
STREET

Entries have opened in a new art prize competition being run by the Empyrean Gallery, 136 Queen Street, Woollahra. The gallery, which opened last year, is offering a range of cash and other prizes and the works of the 50 finalists will be exhibited there in April 2024.

The theme of the Queen Street Art Prize is Native Australian Botanicals, chosen by Empyrean’s founder, Concetta Antico.

‘Our unique Australian native plants provide sustenance and habitats for a wide variety of local wildlife and are necessary to sustain life in this country. I encourage artists to submit work with this focus in mind and with an emphasis on colour,’ she says.

The judging panel includes Concetta Antico, fine artist and Empyrean Gallery owner, Wendy Sharpe AM, fine artist, Marco Meneguzzi, interior designer, and Vanessa Stockard, fine artist.



Principal of Woollahra Public School for the past seven years, Nicole Molloy, has announced she is leaving to take on a new role.



Native Australian Botanicals, such as these, is the theme of the Queen Street Art Prize.

The 50 finalists will be announced on 31 March and the exhibition will run from 27 April to 17 May at the Empyrean Gallery. The prize winners will be announced at 7pm on the opening night of the exhibition. The winners will be announced online as well.

Concetta aims for her prize to instil a love of Australian nature and colour into the arts and the community.

For more information and entry details contact the Empyrean Gallery on 0476 134 901.

PRINCIPAL TO LEAVE
WOOLLAHRA PUBLIC
SCHOOL

Nicole Molloy, principal of Woollahra Public School since 2016, has announced that she will be leaving the school this year to take up a new role. As well as leading WPS admirably for the past seven years, Nicole has become a respected and vital member of the wider Woollahra community. We will all miss her enthusiasm as she led her school choir at the QSWWA Christmas Carols event every year.

Nicole has accepted the role of principal at a newly established public primary school in Green Square, adjacent to Alexandria. As the foundation principal of a brand-new school, she will be embracing the professional challenge of developing and building a school community.

In a personal message to the school community in late December, Nicole expressed her sadness at leaving her ‘beloved Woollahra Public School’, where she began as a pupil in the Opportunity Class before going on to lead the school later in her life.

Nicole will work with educational leadership staff in the early weeks of this year to appoint an acting principal before a new principal is appointed following a formal selection process.

OUR PHILHARMONIC
ORCHESTRA FACES A
CHALLENGING YEAR

The Woollahra Philharmonic Orchestra is facing a challenge this year, having lost its Woollahra Council funding. Council has been helping fund the orchestra since 1999 through

its cultural grants scheme. The loss of the grant this year means the WPO will be turning to the community for support.

But the show must go on and the WPO has created a dazzling program for 2024, commencing in March with Ineffable. One of the highlights of the year will be the second term concert, Innovation, which will feature a world first: a new work by the orchestra’s patron, internationally renowned composer Elena Kats-Chernin. Ms Kats-Chernin, a Soviet-born Australian composer, writes for major symphony orchestras around the world and this remarkable commission by the WPO has been years in the planning.

The WPO is considered, nationally and internationally, to be an outstanding local orchestra and attracts guest conductors and soloists of the highest calibre. Its four annual concerts are as exciting as they are diverse and are a vital part of Woollahra’s arts calendar. The WPO is managed by a volunteer committee of orchestra members, led by President Martin Cohen.

For details of the WPO’s first concert this year turn to page 19.



WPO President Martin Cohen and Concertmaster Rob Nijs. Rob was the violin soloist at the orchestra’s final concert for 2023.



NEW LOUKIE WERLE
COOKBOOK

Former resident cook and cookbook author Loukie Werle has published a new book – *Home: a cookbook* – which is a celebration of great times.

The author of more than a dozen cookbooks and the winner of many awards for her food writing, Loukie is best known to eastern suburbs cooks for something else. For years, her Paddington kitchen was the scene of her cooking classes, the birthplace of many friendships and the centre, of course, of sensational food.

In *Home: a cookbook*, Loukie continues to inspire. Her recipes are simple and reliable, some new as well as old, all of them treasured.

‘When I was wondering what to call the book, “home” seemed almost to choose itself,’ Loukie says. ‘For me, it means our house in the country, old friends and new ones, children and grandchildren. Most of all, “home” means the food I love.’

Loukie’s cooking classes closed their doors, with more

than a few tears, when she and her husband swapped the city for a life on four idyllic acres north of Sydney. But her love of good food remains.

‘I can’t believe how lucky I am to be writing another cookbook,’ Loukie says. ‘It may be a bit like childbirth – you forget the pain – but you also rediscover the joy. But this book, like all the others, once again feels like a gift.’

Home: a cookbook will be available at the Woollahra Bookshop in March, with an in-store book signing by Loukie. Find out more about her books online at loukie.com.au.

NEW RECTOR FOR ALL
SAINTS’ WOOLLAHRA

Marcelo Morbelli has become the ninth rector of All Saints’ Church in Ocean Street. This is Marcelo’s first church as rector. He has taken over from Simon Manchester, who will stay on for a time as assistant minister. All Saints’ Woollahra is a heritage-listed church dating back to the 1870s.



Rector Marcelo Morbelli at his commissioning service in January, together with state member for Vacluse, Kelly Sloane, and Deputy Mayor Sarah Swan.

QSWWA CHRISTMAS CAROLS 2023: A COMMUNITY EVENT FOR ALL

ON A WARM TUESDAY EVENING IN EARLY DECEMBER, THE LEAFY GROUNDS OF CHISWICK GARDENS WERE ONCE AGAIN FILLED WITH OVER 500 PARENTS AND CHILDREN PICNICKING ON THE GRASS AND JOINING IN THE ANNUAL COMMUNITY CHRISTMAS CAROLS, AN EVENT NOW OVER 35 YEARS OLD.

While parents enjoyed a glass of wine and nibbles, excited children queued to have their faces painted, take away an animal made from balloons or get a hot dog from the barbecue, skilfully prepared and cooked by the team from Chiswick Restaurant. Once again, Woollahra Council were very generous supporters and we thank the Mayor, Richard Shields, for officially opening the evening and welcoming everyone. As they always do, many of our local businesses supported the raffle with wonderful prizes.

The musical program began with the very talented accordion player, Philippe, entertaining the crowd with a combination of carols and Christmas tunes. This was followed by a medley of songs from the Woollahra Public School Choir, comprising over 100 singers. Woollahra Public School is an integral part of our community, and it was great to have Principal Nicole Molloy and her team with us again this year. The program concluded with a collection of carols and community singing by a very talented choir led by local resident Hellen Arestides and her friends, making it another very memorable and enjoyable start to the Christmas festivities. It makes it so much a local community event when all the singers are from the area, so many thanks to Nicole and Hellen for all their work.



A HUGE THANK YOU!

The QSWWA would like to acknowledge the major sponsors of the Community Christmas Carols – Woollahra Municipal Council, Georgia Cleary and McGrath, Chiswick Restaurant, Jim’s Cellars and Bodalla Dairy Ice Cream – who together with our raffle prize donors help make the event the success that it is. The Christmas Carols event is our major fundraiser for the year and the raffle is one of the big attractions, thanks to the very generous prizes contributed by the following donors. Please be sure to support all these local businesses who are so very good at supporting the community.

RAFFLE PRIZE DONORS

Matthew Ely Jewellery	Eighteen Ten
Parterre	The Dental Rooms
Richard Banks Optometrist	Kidstuff
Axel Mano	The Book Adviser
Greene & Greene Antiques	Moncur Cellars
Jacadi Paris, Woollahra	Woollahra Bookshop
Reads of Woollahra	Jackie Toetu’u, Salon 92
Perryman Carpets	The Bay Tree
Tanora	Pearl on Queen

Santa and his elves made a very welcome appearance, posing for numerous photos with children and parents and giving each child a delicious Christmas ice cream, generously provided by Bodalla Dairy Ice Cream. Many thanks, Santa and elves!

Again, a big thank you to all our supporters (listed above), the musicians, Woollahra Public School Choir and staff, singers, parents, Santa and his elves (aka Jonny, Cilla and Margot Warre), our photographer Paul McGuire and all the QSWWA committee members. Particular thanks go to our event organiser for the carols, Alan Smith. Alan works tirelessly to organise the carols every year and we are all very grateful and appreciative of his efforts in making it such a successful event.

Photos are available in the Events section of our website, www.woollahravillage.com.au.

GILES EDMONDS



Thinking of selling your property?

PROFESSIONAL, INDUSTRIOUS, ORGANISED & EXPERIENCED AGENT

McGrath

Call Georgia Cleary on 0414 913 913
georgiacleary@mcgrath.com.au

WATER DIVINE: THE CENTENNIAL PARK RESERVOIRS

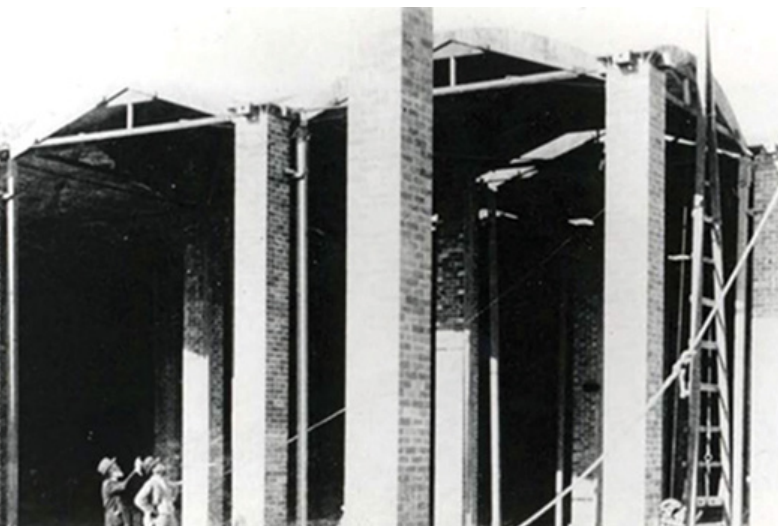
MOST WOOLLAHRA RESIDENTS WILL HAVE DRIVEN PAST OR AROUND CENTENNIAL PARK'S RESERVOIR NO 1, WHICH CAN BE SEEN TO THE RIGHT FROM THE INTERSECTION AT THE TOP OF OCEAN AVENUE AND OXFORD STREET. WHAT YOU MIGHT NOT BE AWARE OF IS ITS HISTORY.

In the 1790s the area close to today's Centennial Park and Moore Park was named the Kangaroo Ground and formed the clan territories of the Gadigal tribe. As the settlement of Sydney began to develop in the early 1800s it became necessary to set aside common land on the outskirts of the town. On 5 October 1811, Governor Lachlan Macquarie proclaimed the 200 hectares (490 acres) to the south of South Head Road as the Sydney Common, for use by the public. The common land contained a vital resource in the form of a constant supply of pure water, due to the natural aquifers present in the Botany Sands system. In recognition of this precious resource, the Lachlan Water Reserve was founded in 1820. Macquarie set aside the water reserve in the east of the Sydney Common and between 1827 and 1838, the Lachlan Water Tunnel (Busby's Bore) was built, supplying fresh water to a terminal in Hyde Park. Both these points can still be visited today. It remained Sydney Town's sole source of water until 1858. In 1866 the Sydney Common was given to the Municipal Council of Sydney for development.

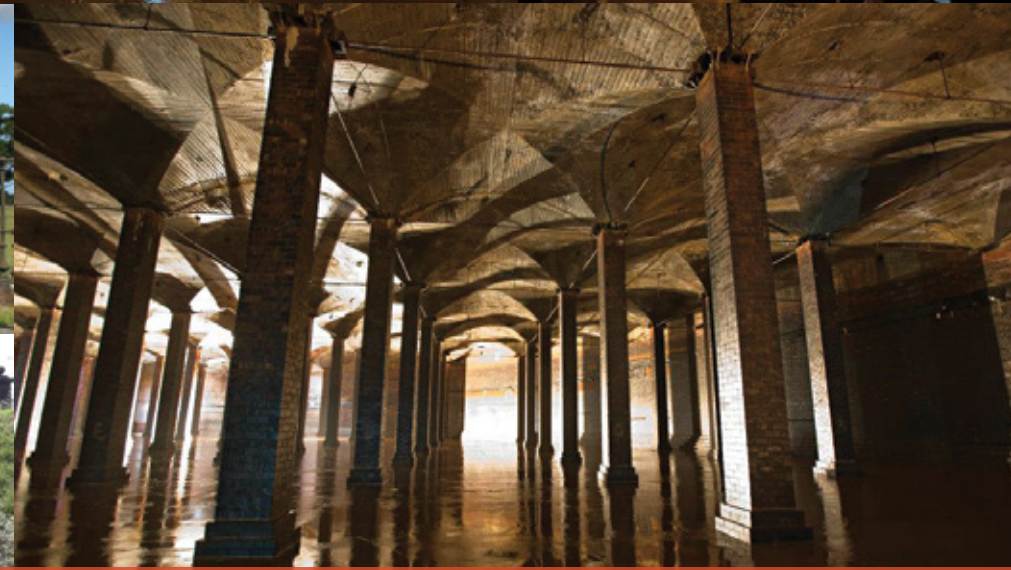
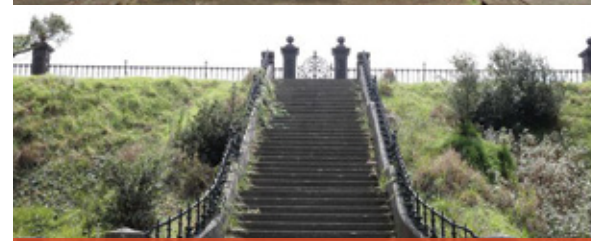
In the second half of the 19th century, parts of Sydney Common were made into parkland. Charles Moore JP, the Mayor of Sydney from 1867 to 1869, worked on developing a public park for the recreation of the people of Sydney. Allotments of land alongside Oxford Street were sold to fund the developments. In 1880, Woollahra Reservoir (on

the corner of Oxford Street and York Road) was built. This reservoir exemplifies the high standard of engineering practice available at the end of the 19th century, in particular its puddled clay blanket, brick walls and roof. The special bricks and cement were imported from England and as with all similar underground reservoirs in Sydney, its roof is supported by lines of brick columns. An unusual feature is the puddled clay membrane on the exterior face of the brick walls (a successful method of waterproofing), the clay being covered by an earth embankment.

Centennial Park was created by the Centennial Celebrations Act of 1887 to commemorate the 100th anniversary of the colony. Centennial Park Reservoir No 1 was built between 1896 and 1898 – the largest covered storage reservoir constructed in Australia at the time. At 16m high and almost the size of Sydney Cricket Ground, it is the biggest underground space in Sydney. The main walls of the reservoir are made of brick, with a typical gravity retaining wall cross section, supported by sloping rubble fill covered in turn with earth fill. The reservoir's roof was grassed over as an anti-fouling device and to provide an uninterrupted view of the Botany valley and Centennial Lakes. If you have attended the Moonlight Cinema, the reservoir is behind you, and you can get a similar view, albeit at a lower level.



An ornate pavilion was built above the central access tower and ventilating shafts of the Centennial Park Reservoir, before the roof was grassed over as it is today. (City of Sydney Archive).



The Woollahra Reservoir features spectacular design and architectural details including a puddled clay blanket, brick walls and roof supported by brick columns. The materials were imported from England. Sydney's Darlington Iron Works manufactured these decorative cast-iron gates. (Courtesy Sydney Water).

At the time of construction, a pavilion was built around the central access tower and ventilating shafts. This had an ornate roof and spires and would have been a landmark at the time of construction. The perimeter of the top of the reservoir has a beautiful cast-iron fence, complete with gates, made by the Darlington Iron Works in Sydney.

Reservoir No 1 was drained and cleaned in 1992 during repairs to the western wall and was briefly open for public viewing while the decorative fence was restored in 2001. In 2012 the reservoir was refurbished and limited tours were undertaken. It is the second oldest functioning reservoir in Sydney and as such has played a continuous, ongoing role as an important facility of the water supply system, particularly for the eastern suburbs. It supplies water by gravitation to the higher levels of the city and a large part of the eastern

suburbs. Centennial Park also provides suction water for a modern electric pumping station, built in 1964, which pumps to Woollahra Reservoir (on the corner of Oxford Street and York Road) and to another large reservoir at Dover Heights, and currently receives water from Warragamba Dam and the Shoalhaven scheme.

Centennial Park's three reservoirs – Woollahra Reservoir (WS 144), 1880, Centennial Park No 1 (WS 22), 1899, and Centennial Park No 2 (WS 23), 1925 – are unique in the Sydney Water catchment system, because of their size, design and level of architectural detailing. So, the next time you are walking around this part of Centennial Park (closest entry, Woollahra Gates), take a moment to appreciate them.

JAQUI LANE

PLAQUE COMMEMORATES GISELLA SCHEINBERG'S HOLDSWORTH GALLERIES: A SANCTUARY FOR THE ARTS

A STREET PLAQUE HONOURING GISELLA SCHEINBERG, OAM, AND HER INSPIRATIONAL CONTRIBUTION TO THE ARTS, HAS BEEN UNVEILED BY WOOLLAHRA COUNCIL AT 96 HOLDSWORTH STREET, OUTSIDE THE FORMER SITE OF THE HOLDSWORTH GALLERIES, A SANCTUARY FOR THE ARTS FOR 27 YEARS.

The plaque, the 44th in the Woollahra Plaque Scheme, is dedicated to Gisella Scheinberg, who became one of the country's foremost art dealers, curators and benefactors of the arts from 1969 when she opened the gallery until it closed following her retirement as director in 1996. Gisella was awarded an OAM in 1985 for Services to the Arts.

The unveiling ceremony last December was attended by Mayor Richard Shields, Councillor Merrill Witt and members of Gisella's family. Guest speaker Geoffrey Smith, art curator and chairman of auction house Smith & Singer, highlighted Gisella's Scheinberg's legacy as a supporter of the arts and many Australian artists.

Gisella Scheinberg was a remarkable woman who lived an equally remarkable life. Born Gisella Blum in Budapest, Hungary in 1921, she was one of four children growing up in a traditional Jewish family with memories of a happy childhood. She went on to study fine art at university but when WWII broke out, she was forced to abandon her



Gisella Scheinberg, art lover and respected curator, established what became one of the city's leading commercial galleries in 1969. She was awarded an OAM for Services to the Arts in 1985. (Photo courtesy Gisella's family.)

studies and flee. She spent months in hiding, escaping concentration camps, working for the resistance and surviving the Holocaust.

After the war Gisella married William Jakob. They migrated to Australia in 1948, sponsored by Albert Scheinberg, a successful businessman who had emigrated from Hungary in 1939. Scheinberg was a supporter of refugees from Europe, enabling many to come to Australia.

In his speech at the unveiling, Geoffrey Smith said of Gisella, 'Hers was a story of modern Australia. Her family was displaced, Australia provided her with a country that embraced her, and she embraced it.'

Gisella and William had one son,

and when their marriage ended, Gisella married Albert Scheinberg in 1955. They had two children together, joining three from his previous marriage. Family was one of the cornerstones of Gisella's life and the large family home in Edgecliff Road, purchased in 1961, was the focus of many family and social gatherings.

After working in Albert's business during the 1950s and '60s, Gisella was ready to start her own. Eventually, drawing on her love of art and her business acumen, she made plans to turn a disused factory on the corner of Holdsworth Street and Jersey Road into a commercial art gallery.

Before Gisella purchased the property in 1968, the old building had been used as a brushworks, a commercial laundry and a telephone plant. In its place, Gisella created a spacious and well-appointed art gallery, the Holdsworth Galleries, which opened with a gala event on 20 September 1969, followed two days later by its first exhibition featuring local artists.

Over the course of the next 27 years, the gallery became a fixture in Woollahra, and Gisella's skill as a businesswoman together with her love of art fuelled its success. Holdsworth Galleries was one of the most sought after in the art world, locally and internationally, and most of Australia's best known 20th century artists exhibited there.



The gallery was extended in October 1973 to include a permanent exhibition space, a sculpture courtyard and a restaurant. Exhibitions changed every three weeks and the gallery was open seven days a week. It was also used as an event location and was a space filled with energy and creativity.

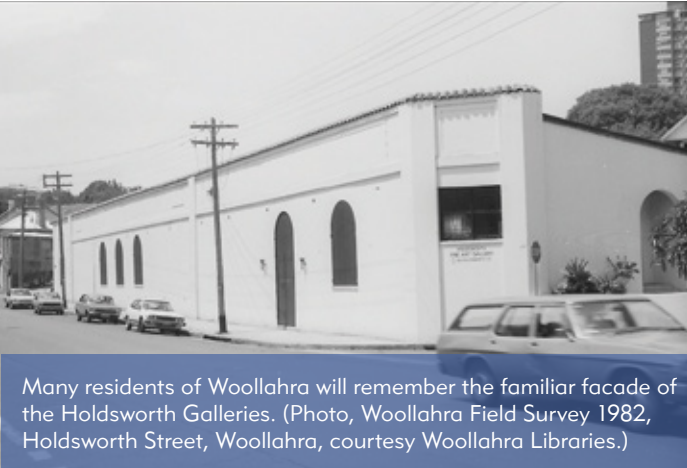
Gisella was director of the Holdsworth Galleries from 1969 until her retirement in 1996. During this time, she exhibited the works of over 900 artists. In the final show at the end of 1996, more than 600 paintings

were on show including works by well-known artists such as Charles Blackman, Arthur Boyd, Donald Friend, Robert Dickerson, Ray Crooke, Patrick Hockey and Robert Juniper.

Holdsworth Galleries closed after Gisella retired. The property was sold and the gallery demolished, and the subsequent re-subdivision saw it replaced by residential and commercial development.

Gisella Scheinberg died in October 2018 at the age of 97 but her wonderful legacy lives on.

CHRISTINE WHISTON



Many residents of Woollahra will remember the familiar facade of the Holdsworth Galleries. (Photo, Woollahra Field Survey 1982, Holdsworth Street, Woollahra, courtesy Woollahra Libraries.)



Geoffrey Smith, Councillor Merrill Witt and Gisella's daughter Deborah Redelman at the unveiling.

THE DENTAL ROOMS
WOOLLAHRA

Happy New Year!
Make 2024 the year you improve your smile.

Book an appointment today!
\$75 off for all new patients.
Ts and Cs apply

Dr Bal Bahra
98 Queen Street, Woollahra
www.dentalrooms.net.au
(02) 9328 7862
reception@dentalrooms.net.au

TANORA

76 QUEEN STREET ~ WOOLLAHRA TANORA.COM.AU

SUMMER IN THE VILLAGE: A PHOTO ESSAY BY JOHN PEEL

FROM SHADY BOWERS TO SIZZLING STREETSCAPES AND SMILING FACES, LOCAL PHOTOGRAPHER JOHN PEEL CAPTURES THE ESSENCE OF SUMMER IN WOOLLAHRA VILLAGE.



OXFORD STREET EAST CYCLEWAY UPDATE

THE NSW GOVERNMENT SEEMS INTENT ON BULLDOZING AHEAD TO FINALISE THE DESIGN OF THE OXFORD STREET EAST CYCLEWAY WITHOUT PAYING ANY ATTENTION TO FEEDBACK FROM LOCAL COMMUNITIES.

As readers will be aware, the QSWWA has voiced its concerns about the likelihood of increased rat-running through Woollahra streets due to the effective capacity of Oxford Street being reduced from two lanes each way to one lane and adding traffic signals for a bike lane crossing at the intersection of Queen Street, Oxford Street and Moore Park Road, increasing traffic delays in Queen Street. Due to significant pushback from residents, the Transport Minister reopened consultation in June and received over 2000 submissions. The results of this consultation were released in mid-December last year.

Sadly, the response from the Project Team ignored the 51% of submissions which opposed the project and the numerous issues raised and can only be summarised as ‘Thanks for your feedback. We’ve listened to you but we think we are right and, except for deleting one no-right turn, we aren’t going to make any changes to our proposed design.’ It is clear from the report that the remit of the team was to design a cycleway for Oxford Street, not to consider whether the existing Moore Park Road cycleway could be maintained as an alternative, so this has not even been considered. It is all very disappointing and we will continue to work with other local organisations to voice our concerns.

The next step for the project is to progress the concept design, final business case and Public Domain and

Activation Strategy. The Review of Environmental Factors (REF) will be put on public display during the future detailed design process. This will create a further opportunity for feedback. We will notify members as soon as this REF is released. It’s the last opportunity to make our voices heard.

GILES EDMONDS



Aerial view of the Paddington Gates intersection, which is set for major changes under the cycleway proposal (photo, Google Maps).

WORKING GROUP PROGRESS REPORT

In December 2023 Transport for NSW released its Consultation Report. It was disappointing on several levels, primarily because it cherry-picked the ‘consultations’ it used to support the case for the Oxford Street Cycleway and did not really address any of the objections that so many Paddington and Woollahra residents had taken the time to explain to them. The report admits that people do not support the cycleway, stating that 51% of all communications oppose the project, 42% support it, and 7% are undecided. Respondents were not aware that the online survey would be the main feedback channel. This despite feedback being extended and over

400 written objections. It’s clear that the government is ignoring our community and seems determined not to consider alternatives.

As a result, the Working Group of combined Paddington and Woollahra business owners and residents has sent a letter to Transport Minister Jo Haylen noting, among a specific list of items where we felt consultation had been ignored, that we believe that the Oxford Street East Cycleway project remains flawed.

The Working Group continues to engage with local and state representatives to have our communities heard.

JAQUI LANE



Ray White Woollahra | Paddington and The Randall Kemp Team sells more property in Woollahra than any other agency.



Interested to know the value of your home?

Reach out to Randall and his team today!



Contact Us

Ray White Woollahra | Paddington

Level 1/68 Moncur Street, Woollahra NSW, 2025
+61 (2) 9357 3434
woollahra.nsw@raywhite.com

Elizabeth Bay Potts Point

40 Macleay Street, Potts Point NSW, 2011
+61 (2) 9331 9600
elizabethbay.nsw@raywhite.com

THE BIG MAN BEHIND A SMALL LANE

MOST OF US DON'T TAKE MUCH NOTICE OF DORHAUER LANE AND ITS CAR PARK, LET ALONE THINK ABOUT WHO IT MIGHT BE NAMED AFTER. BUT THE MAN IT COMMEMORATES, HEINRICH DORHAUER, WAS INSTRUMENTAL IN THE CREATION OF THE WOOLLAHRA THAT WE KNOW AND LOVE TODAY. AND JUST A SHORT STROLL FROM HIS LANE IS AN EVOCATIVE REMNANT OF WOOLLAHRA AS IT WAS MORE THAN A HUNDRED YEARS AGO.

The Dorhauer Lane car park sits on the site of the house in Queen Street that he built for his second wife, Margaretha. They called it Lorelei, after the Lorelei rock on the Rhine near Mainz in Germany where she was born. However, the house that he built for his first wife Maria is still standing. We know it better as the building that contains Zey cafe, Summers Floral and Pizza Moncur.

Heinrich also renovated the post office on Moncur Street (since rebuilt, in 1906) and likely constructed the original Acklands Hotel on the site of the Woollahra Hotel across the road. Some even say that he

built every pub in Woollahra. He certainly built the old Windsor Castle Hotel, complete with crenellations, and the thankfully saved Four in Hand. (Canny builders often built pubs at the same time as they built a block of houses to recoup some of the money they paid out in wages.) Heinrich and his brother Christian are also responsible for many of the houses along Queen Street and elsewhere in Woollahra and Paddington.

Heinrich Gottfried Theodore Dorhauer was born in Schleswig-Holstein in 1827, before the conclusion of a long-running political and territorial dispute that finally saw it become part of Germany. In 1850, he sailed to Hull on the north-east coast of England with just one piece of luggage. From there he drifted down to London, calling himself a 'pianoforte maker' rather than the family's historic trade of carpentry and cabinet-making. He married his first wife Maria there in September 1851 at St Pancras Old Church, one of the most ancient in England and which may date as far back as AD 314.

Restless in England, in 1854 he sailed to Sydney where he caught the gold fever that drew him to the goldfields around Hill End to seek his fortune. It's not known how much gold he found, but he did mine at least enough to make a solid gold ring. By 1858, he had settled in Woollahra, still in its

formative years and on the outskirts of a rapidly expanding Paddington. An entrepreneurial young man, he started a timber yard in Queen Street with his brother Christian.

In October 1859, Heinrich was one of the signatories on the petition that formed the Municipality of Woollahra. Then in 1875 he did his civic duty by exchanging some of his land so that Little Piper Street (now James Street) could be straightened.

The brothers returned to Woollahra from the goldfields for the second time around 1873. And this time they really

did put down their roots. Heinrich took full advantage of the building boom that was starting to build up a head of steam, while it looks as if Christian set up a joinery works in Smith Street. Amazingly, the works are still there, now used as storage by local businesses including Susan Avery Flowers.

Creaking open the old wooden doors and going inside is like walking back in time. Hanging on the wall is a collection of old tools including a rusty saw above a rack of storage boxes. In the next bay, there's a piece of giant woodworking machinery with cogs and flywheels that would have powered a shaft slung under the ceiling. Another blackened part of it pokes up through the floor of the rooms above.

The works were restored in the late 1990s and the machinery and

tools appear to be original; they certainly look old enough, giving us a direct link back to the Dorhauer brothers. Appropriately, their family name – Dürrhauer in its original form – derives from the German words 'tür' and 'hauer' meaning door-cutter or door-maker.

Back in Smith Street, outside the doors with their multicoloured windows in greens and blues and reds and yellows, there's a drain cover stamped 'C Dorhauer Woollahra'. On the wall there's a heritage award plaque put up by the QSWWA in August 1998 with the wording 'In appreciation of this major contribution to our heritage'.



Sadly, it looks as if the days are numbered for this little slice of Woollahra's history. The workshop buildings in Smith Street have been sold and renovations are expected. But we still have Dorhauer Lane to remind us of the contribution that the brothers made to our suburb.

Thanks to Russell Albert James Dorhauer for the invaluable information on his Dorhauer Odyssey website. Any errors in this article are of course all my own work.

ROGER BALCH

Opposite page, like stepping back in time, the brothers' joinery workshop in Smith Street, which was restored in the 1990s. This page, top, multicoloured glass panes are a feature of the doors opening onto the workshop. Above left and right, a collection of old tools hangs above a rack of storage boxes, and a large piece of woodworking machinery complete with cogs and flywheels remains in place.

JEWELLERY TREND: WRIST CANDY

Did you know: the term ‘tennis bracelet’ can be traced back to the 1987 US Open, where professional tennis player Chris Evert lost her diamond bracelet on the court. Fortunately, after a pause in the match, the bracelet was found. Phew!

Traditional tennis bracelets, characterised by a series of individually set diamonds or coloured gemstones linked together in a symmetrical pattern, have never fallen out of fashion. Quite the opposite, according to luxury jewellery designer Matthew Ely. While these classic diamond designs were once reserved for special occasions, these days they’re just as likely to be worn to a sunrise yoga class or casual Sunday coffee date.

‘The concept of “everyday luxury” has been embraced in the past three years, which aligns to the end of Covid lockdowns. Why wait for a “special occasion” when you could add a little sparkle every day?’ says Matthew.

‘While a classic diamond tennis bracelet is the staple, the trend now is to layer a number of these pieces – diamonds, colourful gemstones, or a unique combination – up the arm, for an individual look,’ he adds.

‘Bright colours and artistic designs will also continue to dominate the bracelet market in 2024. We saw a real swing to these styles at the tail end of last year, with colourful sapphires, emeralds and tourmalines set alongside classic diamonds. It’s a little clichéd, but the term “wrist candy” never did ring more true.’



Left to right, top to bottom: The classics: 18 carat white gold and diamond tennis bracelet (104 diamonds); 18 carat rose gold and diamond tennis bracelet (81 diamonds); A little colour: 18 carat rose gold and garnet bracelet; Extra sparkle: 18 carat white gold and diamond bracelet (301 diamonds); Bold designs: 18 carat white gold, sapphire and fancy diamond bracelet; 18 carat white gold, sapphire, emerald and diamond bracelet.

INAPPROPRIATE DA SUBMITTED FOR THE HUGHENDEN HOTEL

It wouldn’t be the summer holidays without a contentious DA being submitted in the hope that everyone is too busy to notice, and so it has happened this summer. This time it is DA 474/2023/1 for the Hughenden Hotel, 8–16 Queen Street, Woollahra. The detailed plans for the site can be found on the council website by searching for the DA.

- The QSWWA has two major concerns regarding this DA:
- It proposes three storeys plus a roof on which service equipment is installed. Under the local zoning for 8–16 Queen Street, the maximum height allowed is 9.5m. The height of the proposed third storey is 13.1m, with the equipment on the roof taking the total height to 14.6m. Queen Street is a key part of the Woollahra Heritage Conservation Area. Any relaxation on building heights would set a terrible precedent for the area and we would urge the planning department to reject the plans on these grounds alone.
 - The proposal is for a total of 43 bedrooms. The plans submitted have no onsite parking – none – despite 47 parking places being required under the current Development Control Plan!! That means that staff and all guests arriving with cars will need to find additional

parking, either short term on Queen Street or in the surrounding streets where there are some 24-hour parking spots. Parking availability is bad enough in our streets and this will only compound it. Again, this is another massive reason to refuse the application.

The QSWWA has submitted an objection to Woollahra Council and we urge concerned residents and businesses to do the same. It is very important that the council and the decision-making body, probably the Local Planning Panel, understand that there is strong community opposition. Objections can be submitted by email to records@woollahra.nsw.gov.au (please quote the DA number DA 474/2023/1). Council quotes a deadline of 1 February but don’t be put off by that, as the standard practice is to include all submissions up until a day or two before the DA is before the panel. As you read this, it is unlikely that the matter has gone to the panel, so there is still time to object.

The Hughenden needs renovating, but the renovations need to fit within the area’s heritage restrictions and not create extra parking problems for residents and businesses.

GILES EDMONDS

WOOLLAHRA
PHILHARMONIC
ORCHESTRA

DANIEL PINI
Conductor

CALLUM HOGAN
Oboe

INEFFABLE

MENDELSSOHN, F. Arr. Pini
STRAUSS, R.
BEETHOVEN

Song Without Words op.8 no.1
Oboe Concerto
Symphony 3 'EROICA'

Callum Hogan
Daniel Pini

Oboe
Conductor

Saturday
Sunday

23 March 2024 5:30pm
24 March 2024 2:30pm

Saint Columba Uniting Church
Corners Forth and Ocean Streets, Woollahra

Tickets \$25 & \$40

www.humanitix.com
www.wpo.org.au
info@wpo.org.au

FEBRUARY 2024 | 19

MONCUR CELLARS: CHARDONNAY ALL THE WAY

As we dive into 2024, the year is off to an exciting start! Our inaugural Chardonnay Australia Tasting event was a phenomenal success, with tickets selling out well in advance. But fear not, there's plenty more in store over the next few months, so mark your calendars early to ensure you don't miss out.

Save the date for our Australian Pioneer Families dinner on Thursday 18 April. Hosted by Jane Tyrrell, this exclusive event celebrates the heritage of Langmeil, Tyrrell's, Seven Hills, Jim Barry and Yalumba. Immerse yourself in an exquisite menu crafted by Bistro Moncur, paired with fine wines, as we honour the timeless contributions of these wineries to the Australian wine industry. Book your seat now for an evening that pays homage to the past, present and future of our vibrant wine community.

As a nod to these five pioneer estates, enjoy a special in-store deal throughout March and April. Purchase any two bottles from these iconic wineries and receive \$10 off.



Looking ahead, our Pinot Noir Australia Tasting event on Monday 6 May promises to be a treat for the palate, featuring over 140 wines from top Australian pinot noir suppliers. Tickets will go on sale in March.

Mark your calendars again for the Shiraz Australia Tasting event on Monday 19 August. Now in its sixth year, the celebration will showcase

over 40 Australian shiraz producers and up to 100 iconic wines. Tickets will be available in June.

For further details and bookings, visit our website. And don't forget to drop by in March as we welcome small, allocated stock arrivals like Timo Mayer and Yeringberg from the Yarra Valley. Chat with Mark and the team to discover the new gems and get added to our black book. Cheers to a year filled with exceptional wine experiences at Moncur Cellars!

MONCUR CELLARS

WWW.MONCURCELLARS.COM.AU/EVENTS/



Moncur Cellars' first-ever chardonnay tasting at Bistro Moncur was a huge success and a highlight of summer.

HEALTHY AGEING: HOLDSWORTH'S SENIORS FESTIVAL WEEK 2024

HOLDSWORTH, A DEDICATED PROVIDER IN THE AGED CARE DEPARTMENT, IS EXCITED TO PRESENT THE SENIORS FESTIVAL 2024, THEMED 'REACH BEYOND'. THIS WEEK-LONG EVENT, RUNNING FROM MONDAY 11 TO FRIDAY 15 MARCH, AIMS TO PROMOTE HOLDSWORTH'S SERVICES AND RAISE AWARENESS ABOUT HEALTHY AGEING.

By aligning with the festival's theme, Holdsworth encourages participants, supporters and the local community to navigate new possibilities in the realm of ageing.

WEEK-LONG OPEN DAYS AT HOLDSWORTH

Holdsworth will host a series of engaging events as part of the Seniors Festival.

Monday 11 March:

Navigating My Aged Care. Understand the intricacies of My Aged Care and learn about the support available. From 10am to 12pm, Woollahra Library Foyer, Double Bay.

Tuesday 12 March: Let's connect! Give it a go with Holdsworth at our Tuesday connect program. Come and try your best at some of our favourite activities at Holdsworth including tai chi, knitting, and our famous melody makers – sing along with old and new friends.

Wednesday 13 March: Wednesday Wellness Club. Come and join our Wednesday Wellness Club and learn some valuable tips from our physio about falls prevention, low-impact exercises and more.

Thursday 14 March: Navigating dementia workshop. Join us for morning tea and a conversation with aged-care experts and service providers who will share information and practical support for carers, people living with dementia, and their families. From 10am to 1pm, Thornton Room, Woollahra Council, 536 New South Head Road, Double Bay. To book contact www.holdsworth.org.au.

Friday 15 March: Holdsworth's famous BBQ Bonanza and celebrations. Wrap up the week and join us for our final celebration for Seniors Week 2024, including a fun and lively BBQ Bonanza at Gaden. Contact Holdsworth to find out more.



A BBQ Bonanza at the end of the week will wrap up a series of community events.

CONNECTION, CARE, COMMUNITY: HERE FOR YOU

Holdsworth invites everyone to join the Seniors Festival 2024 and discover new possibilities in healthy ageing. The varied events throughout the week promise an enriching experience for all attendees, fostering connections and promoting overall wellbeing. From understanding My Aged Care to connecting with your community, trying exercise classes, attending a dementia forum, to enjoying a fun BBQ on Friday, there's something for everyone.

Jump online

@holdsworthcommunity and check out our daily social media posts which will include valuable tips and tricks from Holdsworth staff, uplifting stories, and detailed information about the upcoming events for the week.

JOIN HOLDSWORTH FOR UPCOMING EVENTS

Holdsworth's commitment is to empower individuals to maintain their independence, enhance their quality of life, and foster meaningful connections. We proudly offer a range of comprehensive services spanning disability, aged care, families, and carers, ensuring tailored support that aligns with your unique needs and aspirations.

Holdsworth's dedicated team is ready to assist you in navigating the range of services on offer. Some services are funded through My Aged Care and the NDIS, and the team is here to guide you through the options.

Join information sessions to learn more and connect with Holdsworth today to explore how Holdsworth can enrich your life and support your journey in the community.

Call us on 02 9302 3600 or visit www.holdsworth.org.au.

ASK THE VET

ORTHOPAEDIC ISSUES IN PETS

Orthopaedic issues, meaning problems involving the bones, joints, muscles and ligaments, are very common in our pets and cause discomfort, decreased mobility and a compromised quality of life.

Arthritis is one of the most common conditions affecting older pets, involving normal wear and tear of joints leading to degeneration of cartilage, which results in pain and discomfort during movement. The most common signs are stiffness when moving, especially after rest, not being able to walk or run for as long as they used to, difficulty on stairs and reduced ability to get up and down from

furniture or the car. Treatment ranges from weight management and joint supplements to physical therapy and pain-relief medications.

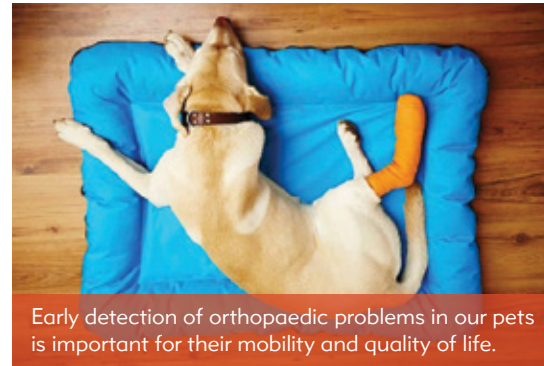
Acute orthopaedic injuries include soft-tissue injuries involving muscles and tendons, or bone fractures. If an acute injury has occurred it is best to get the pet assessed by a vet as soon as possible, and X-rays may be necessary to identify the injury. Soft-tissue injuries usually resolve with anti-inflammatory medication and a period of rest, while fractures often require surgery by a specialist veterinary surgeon to stabilise the bone and allow proper healing.

Certain dog breeds are predisposed to congenital orthopaedic conditions such as hip or elbow dysplasia and patellar luxation (knee dislocation).

These can usually be detected at a young age and are often diagnosed on X-ray or advanced imaging. More severe cases may require surgery.

Early detection and management of these conditions will help the animal to live an active and pain-free life.

DR INDIA, JERSEY ROAD VETS



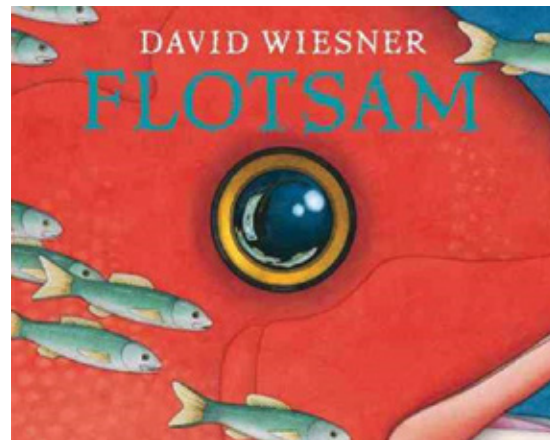
Early detection of orthopaedic problems in our pets is important for their mobility and quality of life.

A love of nature and conservation is at the heart of this story about a boy who sets out to protect a tree in a threatened verdant patch in his street.

David Wiesner's *Flotsam* tells what happens when an underwater camera washes up onshore. Discovered by a boy, the camera reveals images of aquatic life – and something surprising.

Ask Elizabeth about the wonderful world of wordless picture books.

WOOLLAHRA BOOKSHOP
SPICER STREET | 02 9328 2733
SHOP@WOOLLAHRABOOKSHOP.COM



COUNCILLOR'S CORNER



MORE EFFICIENT DA PROCESS

I want to make it easier for Woollahra residents to make improvements to their property without getting caught up in red tape, while ensuring we protect the area from overdevelopment.

I have proposed that council consider a two-stream approach to DAs. Put simply, I want to ensure we prioritise residents by separating 'simple' from 'complex' applications. This will help overcome the backlog and delays faced by residents who simply wish to improve their homes, as opposed to developers whose applications are often complex and face significant community opposition.

Council unanimously supported my proposal to investigate the use of Artificial Intelligence to automatically identify missing parts of a DA and advise the applicant, saving time and leaving council staff to process completed applications.

These initiatives, underpinned by new technologies, can make council's systems and processes more efficient, saving residents time and money.

ISRAELI FLAG

As the daughter of Jewish parents, and with grandparents forced to leave Germany in 1933, I am proud to see the Israeli flag flying at council chambers. At the same time, I am deeply saddened by the repeated acts of blatant anti-Semitism by individuals

defacing council property. I have been shocked by the hateful vitriol directed at the Jewish community in Australia. It is un-Australian for anyone to be persecuted based on their faith, heritage or social identity. This is not the Australia I know and love. Encouragingly, so many in Woollahra have shown support for our Jewish community, which gives me great hope that the Israel –Australia relationship will continue to be strengthened. Israel was created despite the Holocaust and will overcome, by standing up against its adversaries. Never again is now.

REVITALISATION OF COMMUNITY AND RECREATIONAL SPACES

I am incredibly proud of council's substantial improvements to Harbourview Park and Moncur Reserve but there is a lot more to do. These aren't just improvements in infrastructure, they demonstrate our commitment to creating engaging community spaces and our dedication to providing welcoming and inclusive spaces for all.

Since my election to council in 2021, I have seen a step up in direct community engagement, helping to ensure council are focusing on projects that matter most to the community. Your feedback has played a direct role in the enhancement of the Cooper Park

tennis courts and Harbourview Park, demonstrating council's willingness to respond to the community's needs and reflect a proactive approach in boosting community involvement and fostering active lifestyles. I am keenly awaiting updates on Lough Park as part of my continuous effort to enhance our green spaces, ensuring they align with our community's needs, and I look forward to hearing from you about the proposals.

OXFORD STREET EAST CYCLEWAY

The proposed cycleway (see the article on page 14) would significantly disrupt hundreds of local businesses during construction. Government bodies should be developing proposals in consultation with businesses, to help promote the businesses, not be the cause of uncertainty.

Transport for NSW has agreed to reopen consultation following our appeals that the initial consultation period and scope was inadequate.

I would prefer to see the money spent on other priority projects which are also directed at increasing pedestrian safety, improving accessibility for cyclists, and reducing congestion, as reflected in the newly adopted Active Transport Strategy. You can read more about the strategy on council's website.

DEVELOPMENT STRATEGIES

Council's Double Bay Strategy to limit overdevelopment and protect the village-like feel of the suburb has received widespread support from the community. The strategy aims to take a balanced approach to preserving our community's character while accommodating growth. I expect the Edgecliff Strategy to be finalised in the coming months. Only by being proactive and setting boundaries will our community continue to flourish.

DEPUTY MAYOR COUNCILLOR SARAH SWAN
LIBERAL PARTY 0429 570 077



Getting into the swing of things at one of council's improved local recreational spaces with Mayor Richard Shields.



It's not just the jewellery.
It's the story behind it.

M

MATTHEW ELY